

Portfolio: TEIKO GLOBAL EQUITY & FX

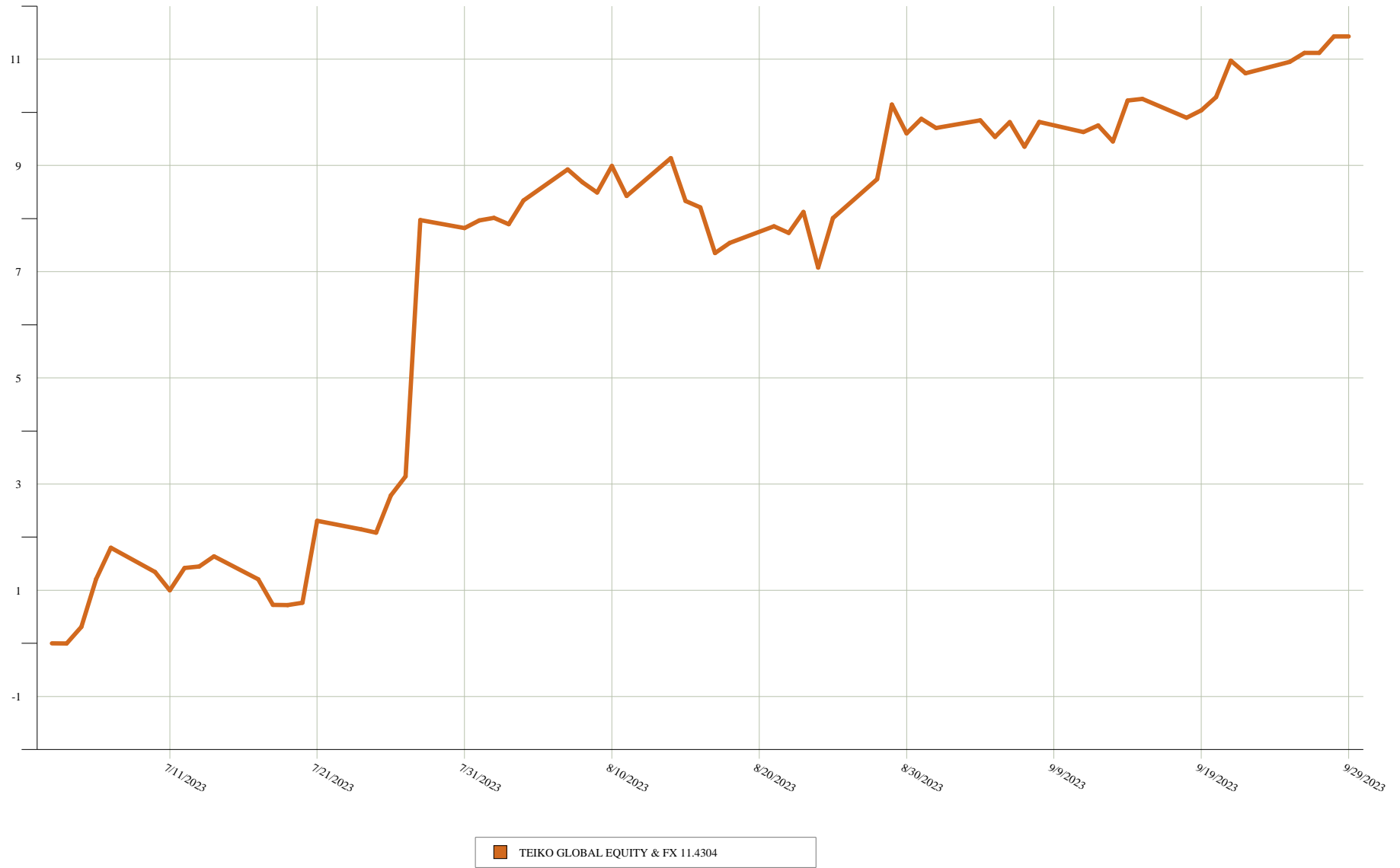
Benchmark: Default (None)

Start Date: 7/3/2023

End Date: 9/29/2023

Currency: EUR

Total Return %



This report may not be modified or altered in any way. The BLOOMBERG PROFESSIONAL service and BLOOMBERG Data are owned and distributed locally by Bloomberg Finance LP ("BFLP") and its subsidiaries in all jurisdictions other than Argentina, Bermuda, China, India, Japan and Korea (the "BFLP Countries"). BFLP is a wholly-owned subsidiary of Bloomberg LP ("BLP"). BLP provides BFLP with all the global marketing and operational support and service for the Services and distributes the Services either directly or through a non-BFLP subsidiary in the BLP Countries. BFLP, BLP and their affiliates do not provide investment advice, and nothing herein shall constitute an offer of financial instruments by BFLP, BLP or their affiliates.

User Name: MANEL NOGUERON

Portfolio: TEIKO GLOBAL EQUITY &amp; FX

Start Date: 7/3/2023

End Date: 9/29/2023

Currency: EUR

Method: MAC

## Atribución - Principal

	Total Return (%)	Contribution to Return (%)	Allocation Effect (%)	Selection Effect (%)	Currency Effect (%)	Transaction Effect (%)	Lev	Px Diff	Px Rtn	Inc Rtn	Curr Rtn
TEIKO GLOBAL EQUITY & FX	11.43	11.43							9.40	0.29	1.74
Communication Services	10.61	0.69						10.53	0.00	0.08	0.08
META PLATFORMS INC-CLASS A	10.61	0.69						10.53	0.00	0.08	0.08
Consumer Discretionary	-9.25	-0.65						-11.79	0.72	1.82	1.82
BEST BUY CO INC	-13.57	-0.65						-17.56	1.19	2.79	2.79
FERRARI NV	4.31	0.35						2.70	0.00	1.61	1.61
GENERAL MOTORS CO	-5.14	-0.43						-3.01	0.00	-2.14	-2.14
LVMH MOET HENNESSY LOUIS VUI	-9.16	-0.74						-9.16	0.00	0.00	0.00
NVR INC	-2.05	0.35						-1.29	0.00	-0.76	-0.76
TRIP.COM GROUP LTD-ADR	4.33	0.48						2.59	0.00	1.74	1.74
Consumer Staples	0.77	0.08						-1.14	0.19	1.72	1.72
ARCHER-DANIELS-MIDLAND CO	0.06	0.01						0.00	0.00	0.06	0.06
COSTCO WHOLESALE CORP	0.76	0.07						-2.12	0.19	2.70	2.70
MONDELEZ INTERNATIONAL INC-A	-0.05	-0.01						0.98	0.00	-1.03	-1.03
Energy	1.88	0.15						1.71	0.00	0.17	0.17
CONOCOPHILLIPS	1.88	0.15						1.71	0.00	0.17	0.17
Financials	-1.47	0.03						-1.82	0.00	0.35	0.35
PRINCIPAL FINANCIAL GROUP	-1.47	0.03						-1.82	0.00	0.35	0.35
Health Care	0.06	0.00						0.00	0.00	0.06	0.06
ABBOTT LABORATORIES	0.06	0.00						0.00	0.00	0.06	0.06
Industrials	0.51	0.03						-2.72	0.55	2.69	2.69
HONEYWELL INTERNATIONAL INC	0.51	0.03						-2.72	0.55	2.69	2.69
LOCKHEED MARTIN CORP		0.00						0.00	0.00	0.00	0.00
Information Technology	0.34	0.15						-0.34	0.06	0.62	0.62
APPLE INC	6.64	0.55						5.08	0.14	1.42	1.42
INFINEON TECHNOLOGIES AG	-4.53	-0.40						-4.53	0.00	0.00	0.00
Materials	-2.44	-0.31						-5.83	0.45	2.94	2.94
PPG INDUSTRIES INC	-2.44	-0.31						-5.83	0.45	2.94	2.94
Not Classified	15.62	11.27						15.62	0.00	0.00	0.00
Short Margin of TEIKO GLOBAL EQUITY & FX	0.00	0.00						0.00	0.00	0.00	0.00
TEIKO CURRENCY	18.05	11.27						18.05	0.00	0.00	0.00

This report may not be modified or altered in any way. The BLOOMBERG PROFESSIONAL service and BLOOMBERG Data are owned and distributed locally by Bloomberg Finance LP ("BFLP") and its subsidiaries in all jurisdictions other than Argentina, Bermuda, China, India, Japan and Korea (the "BFLP Countries"). BFLP is a wholly-owned subsidiary of Bloomberg LP ("BLP"). BLP provides BFLP with all the global marketing and operational support and service for the Services and distributes the Services either directly or through a non-BFLP subsidiary in the BLP Countries. BFLP, BLP and their affiliates do not provide investment advice, and nothing herein shall constitute an offer of financial instruments by BFLP, BLP or their affiliates.

Portfolio: TEIKO GLOBAL EQUITY & FX

Benchmark: Default (None)

Start Date: 7/3/2023

End Date: 9/29/2023

Currency: EUR

Price: PRIMARY

Return Unit: Percentage

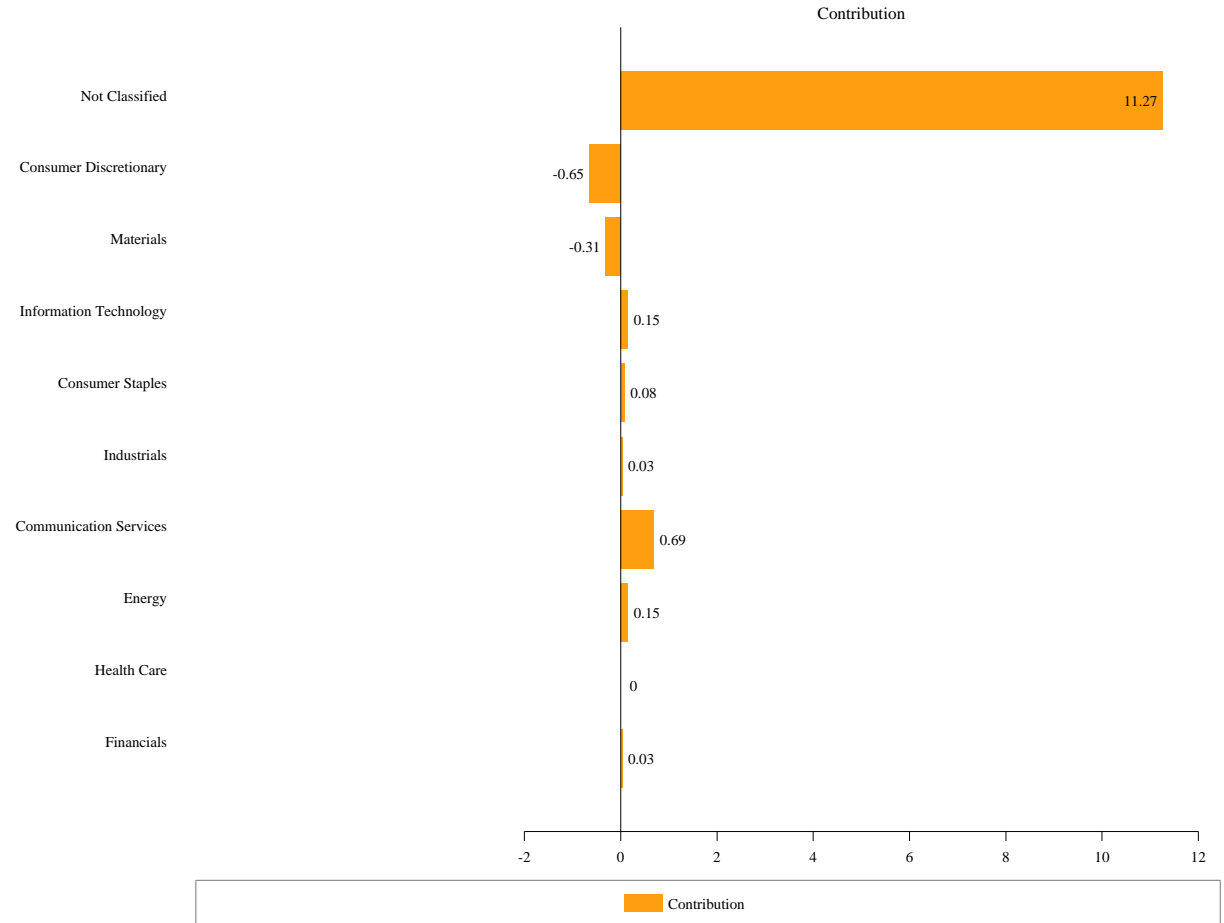
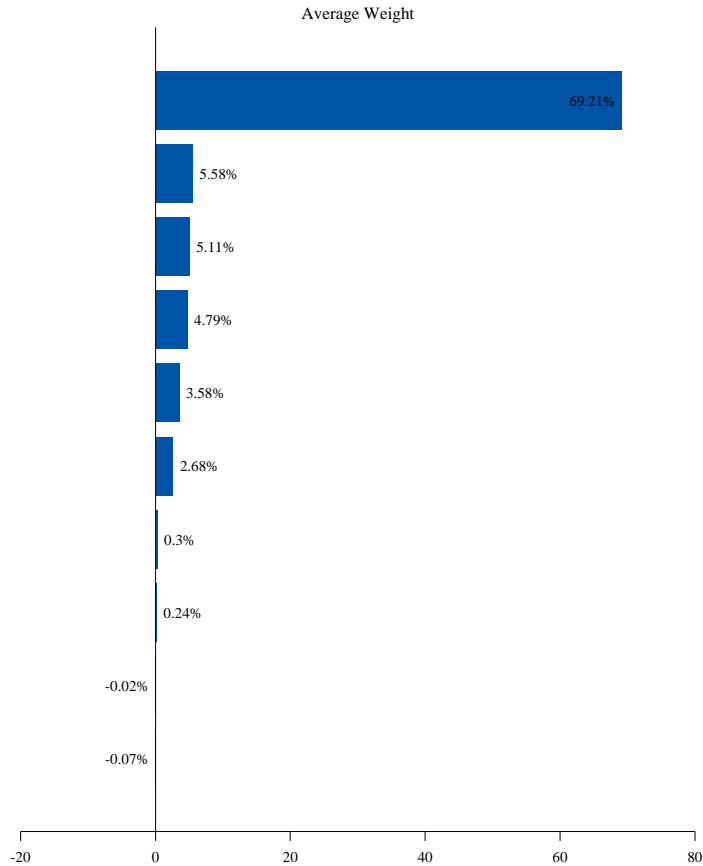
Method: MAC

Return Summary

Return Summary	
Portfolio Return	11.43
Active Return	

Active Return Attribution Summary

Sum of Allocated Factors	
--------------------------	--



This report may not be modified or altered in any way. The BLOOMBERG PROFESSIONAL service and BLOOMBERG Data are owned and distributed locally by Bloomberg Finance LP ("BFLP") and its subsidiaries in all jurisdictions other than Argentina, Bermuda, China, India, Japan and Korea (the "BFLP Countries"). BFLP is a wholly-owned subsidiary of Bloomberg LP ("BLP"). BLP provides BFLP with all the global marketing and operational support and service for the Services and distributes the Services either directly or through a non-BFLP subsidiary in the BLP Countries. BFLP, BLP and their affiliates do not provide investment advice, and nothing herein shall constitute an offer of financial instruments by BFLP, BLP or their affiliates.

User Name: MANEL NOGUERON

Portfolio: TEIKO GLOBAL EQUITY & FX

As-of Date: 9/29/2023

Currency: EUR

Risk Model: Integrated Multi-Asset

Horizon: 1 year (252 days)

Reporting Units: Returns (%)

Tracking Error - Tracking error/Volatilidad

	% Weight		Gross Weight	Total Risk	Contribution (%)	Beta
	Port	+/-				
TEIKO GLOBAL EQUITY & FX	100.00	100.00				
Not Classified	100.00	100.00				
TEIKO CURRENCY	100.00	100.00				

This report may not be modified or altered in any way. The BLOOMBERG PROFESSIONAL service and BLOOMBERG Data are owned and distributed locally by Bloomberg Finance LP ("BFLP") and its subsidiaries in all jurisdictions other than Argentina, Bermuda, China, India, Japan and Korea (the "BFLP Countries"). BFLP is a wholly-owned subsidiary of Bloomberg LP ("BLP"). BLP provides BFLP with all the global marketing and operational support and service for the Services and distributes the Services either directly or through a non-BFLP subsidiary in the BLP Countries. BFLP, BLP and their affiliates do not provide investment advice, and nothing herein shall constitute an offer of financial instruments by BFLP, BLP or their affiliates.

User Name: MANEL NOGUERON      Portfolio: TEIKO GLOBAL EQUITY & FX      As-of Date: 9/29/2023      Currency: EUR      Risk Model: Integrated Multi-Asset  
 Horizon: 1 year (252 days)      Reporting Units: Returns (%)

Proxies

Identifier	Name	Reason	Source	Proxy Description	Proxy Price	Proxy Char	Proxy Exposure	Proxy FX Exposure
.TEIKOCR SM Equity	TEIKO CURRENCY	Not covered by model.	Portfolio					

This report may not be modified or altered in any way. The BLOOMBERG PROFESSIONAL service and BLOOMBERG Data are owned and distributed locally by Bloomberg Finance LP ("BFLP") and its subsidiaries in all jurisdictions other than Argentina, Bermuda, China, India, Japan and Korea (the "BFLP Countries"). BFLP is a wholly-owned subsidiary of Bloomberg LP ("BLP"). BLP provides BFLP with all the global marketing and operational support and service for the Services and distributes the Services either directly or through a non-BFLP subsidiary in the BLP Countries. BFLP, BLP and their affiliates do not provide investment advice, and nothing herein shall constitute an offer of financial instruments by BFLP, BLP or their affiliates.

Portfolio: TEIKO GLOBAL EQUITY & FX

Benchmark: Default (None)

Start Date: 7/3/2023

End Date: 9/29/2023

Currency: EUR

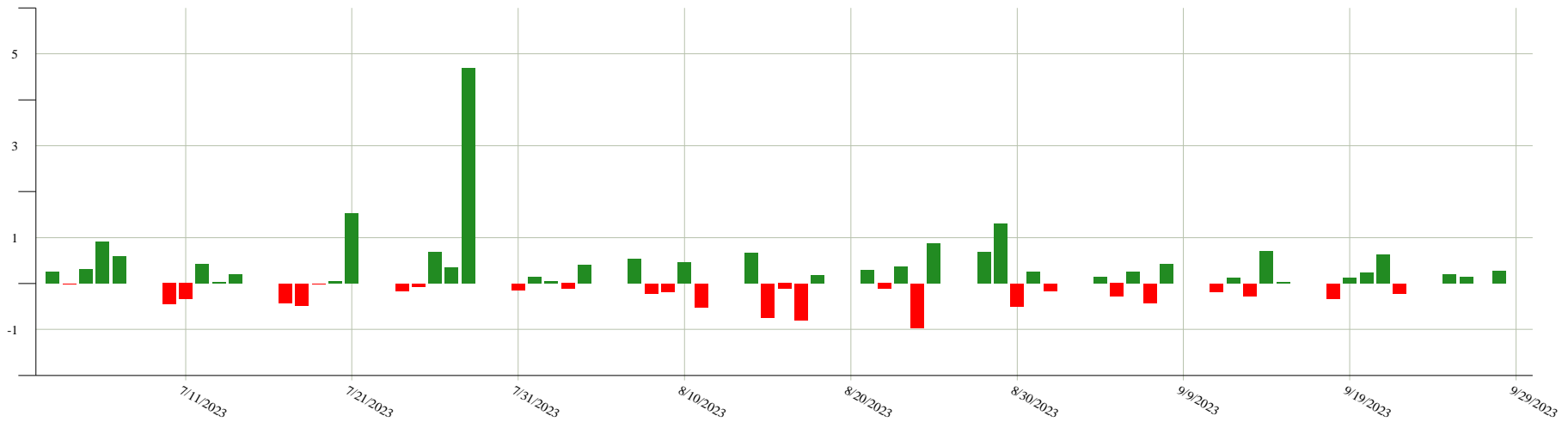
Period Analysis

	Up	Down	Total
Number	38	26	64
Percentage	59.38	40.63	100
Average	0.50	-0.31	0.17
Standard Dev.	0.78	0.25	0.74
Max Sequence	5	3	5
Avg Sequence	2	1.37	1.68

Best-Worst

	Performance	Date
Best 1	4.68	07/28/2023
Best 2	1.53	07/21/2023
Best 3	1.29	08/29/2023
Worst 1	-0.97	08/24/2023
Worst 2	-0.80	08/17/2023
Worst 3	-0.74	08/15/2023

Total Returns



This report may not be modified or altered in any way. The BLOOMBERG PROFESSIONAL service and BLOOMBERG Data are owned and distributed locally by Bloomberg Finance LP ("BFLP") and its subsidiaries in all jurisdictions other than Argentina, Bermuda, China, India, Japan and Korea (the ("BFLP Countries"). BFLP is a wholly-owned subsidiary of Bloomberg LP ("BLP"). BLP provides BFLP with all the global marketing and operational support and service for the Services and distributes the Services either directly or through a non-BFLP subsidiary in the BLP Countries. BFLP, BLP and their affiliates do not provide investment advice, and nothing herein shall constitute an offer of financial instruments by BFLP, BLP or their affiliates.

User Name: MANEL NOGUERON

Portfolio: TEIKO GLOBAL EQUITY &amp; FX

As-of Date: 9/29/2023

Currency: EUR

## Rentabilidad - Principal

	Total Return 1D (%)	Total Return MTD (%)	Total Return YTD (%)	P&L YTD
TEIKO GLOBAL EQUITY & FX	0.00	1.41	31.01	1,153,008
Communication Services			25.64	125,619
ALPHABET INC-CL A			7.52	15,220
ALPHABET INC-CL C			0.97	4,424
AT&T INC			-5.51	-12,876
META PLATFORMS INC-CLASS A			22.37	123,436
WALT DISNEY CO/THE			1.00	-4,584
Consumer Discretionary		-7.66	-288.77	-9,972
ALIBABA GROUP HOLDING-SP ADR			-7.04	-4,235
AMAZON.COM INC			21.49	46,913
BEST BUY CO INC		-7.57	-6.77	-86,333
DECKERS OUTDOOR CORP			0.62	-2,813
DICK'S SPORTING GOODS INC			1.50	6,846
DR HORTON INC			1.09	-5,034
EBAY INC			0.14	-661
EXPEDIA GROUP INC			-2.66	-12,328
FERRARI NV			4.31	19,592
GENERAL MOTORS CO			-5.14	-11,387
INDUSTRIA DE DISENO TEXTIL			-0.77	-4,085
JD.COM INC-ADR			-8.74	-20,317
LVMH MOET HENNESSY LOUIS VUI		-5.08	-9.16	-43,171
NVR INC			4.11	-17,813
PDD HOLDINGS INC			0.73	3,311
PROSUS NV			0.85	4,284
RENAULT SA			9.26	89,425
ROSS STORES INC			1.22	5,560
STELLANTIS NV			1.81	4,229
TESLA INC			-1.50	6,800
TJX COMPANIES INC			0.14	654
TRIP.COM GROUP LTD-ADR			4.33	11,545
VAIL RESORTS INC			0.21	-955
Consumer Staples		0.85	-1.60	-15,057
ANHEUSER-BUSCH INBEV SA/NV			1.03	3,000
ARCHER-DANIELS-MIDLAND CO			-3.45	-16,107
COSTCO WHOLESALE CORP		0.85	0.76	3,452
MONDELEZ INTERNATIONAL INC-A			-0.05	-125
PERNOD RICARD SA			0.62	-3,107
TARGET CORP			-0.46	-2,170
Energy			2.48	48,608
BAKER HUGHES CO			4.40	20,281
CONOCOPHILLIPS			-1.31	8,008
EXXON MOBIL CORP			3.99	17,763
PIONEER NATURAL RESOURCES CO			-2.01	-9,453
TOTALENERGIES SE			2.58	12,010
Financials			30.95	30,133
ABN AMRO BANK NV-CVA			14.43	-5,595
APOLLO GLOBAL MANAGEMENT INC			3.34	15,235
CARLYLE GROUP INC/THE			-3.14	14,276
CME GROUP INC			0.77	3,608
COINBASE GLOBAL INC -CLASS A			8.42	38,377
EVEREST GROUP LTD			-4.87	-22,651
MARSH & MCLENNAN COS			0.98	-4,452
PRINCIPAL FINANCIAL GROUP			-0.36	166
US BANCORP			-1.57	-7,246
VISA INC-CLASS A SHARES			-0.68	-1,584

This report may not be modified or altered in any way. The BLOOMBERG PROFESSIONAL service and BLOOMBERG Data are owned and distributed locally by Bloomberg Finance LP ("BFLP") and its subsidiaries in all jurisdictions other than Argentina, Bermuda, China, India, Japan and Korea (the "BFLP Countries"). BFLP is a wholly-owned subsidiary of Bloomberg LP ("BLP"). BLP provides BFLP with all the global marketing and operational support and service for the Services and distributes the Services either directly or through a non-BFLP subsidiary in the BLP Countries. BFLP, BLP and their affiliates do not provide investment advice, and nothing herein shall constitute an offer of financial instruments by BFLP, BLP or their affiliates.

User Name: MANEL NOGUERON

Portfolio: TEIKO GLOBAL EQUITY &amp; FX

As-of Date: 9/29/2023

Currency: EUR

	Total Return 1D (%)	Total Return MTD (%)	Total Return YTD (%)	P&L YTD
Health Care			-19.23	-25,210
ABBOTT LABORATORIES			-0.52	238
ABBVIE INC			0.00	-5
AGILENT TECHNOLOGIES INC			-0.14	330
AMGEN INC			-9.80	-70,766
BECTON DICKINSON AND CO			4.24	19,675
HUMANA INC			-1.65	7,567
MERCK KGAA			3.50	17,752
Industrials		-0.52	13,542.62	9,620
BOUYGUES SA			-0.98	4,893
DAIMLER TRUCK HOLDING AG			0.41	2,053
DASSAULT AVIATION SA			1.11	5,526
DELTA AIR LINES INC			-4.09	-14,511
DIDI GLOBAL INC			-2.16	9,378
FEDEX CORP			0.18	-948
HONEYWELL INTERNATIONAL INC		-0.52	0.51	2,307
ILLINOIS TOOL WORKS			3.90	-30,668
LOCKHEED MARTIN CORP			0.96	442
RTX CORP			2.84	13,095
TEXTRON INC			1.22	18,052
Information Technology		0.17	-104.78	239,065
ACCENTURE PLC-CL A			-0.10	474
ADVANCED MICRO DEVICES			1.64	7,399
APPLE INC			9.46	33,940
AUTODESK INC			0.92	4,200
CAPGEMINI SE			1.47	7,350
CORNING INC			1.81	22,058
HP INC			0.49	-2,228
INFINEON TECHNOLOGIES AG		0.17	-6.30	-31,264
MOTOROLA SOLUTIONS INC			-1.90	29,356
NVIDIA CORP			-5.65	14,319
PALO ALTO NETWORKS INC			-0.13	-133
SALESFORCE INC			4.78	-20,607
SERVICENOW INC			1.99	14,127
TEXAS INSTRUMENTS INC			1.17	5,355
WESTERN DIGITAL CORP			12.42	56,593
ZSCALER INC			17.54	98,126
Materials		-2.04	-1.60	-8,424
CELANESE CORP			0.85	3,917
PPG INDUSTRIES INC		-2.04	-2.44	-12,341
Real Estate			-2.36	3,624
AMERICAN TOWER CORP			-1.59	7,224
EQUINIX INC			-0.78	-3,600
Not Classified	0.00	4.97	33.08	755,001
Short Margin of TEIKO GLOBAL EQUITY & FX			0.00	
TEIKO CURRENCY	0.00	4.97	39.90	755,001

This report may not be modified or altered in any way. The BLOOMBERG PROFESSIONAL service and BLOOMBERG Data are owned and distributed locally by Bloomberg Finance LP ("BFLP") and its subsidiaries in all jurisdictions other than Argentina, Bermuda, China, India, Japan and Korea (the "BFLP Countries"). BFLP is a wholly-owned subsidiary of Bloomberg LP ("BLP"). BLP provides BFLP with all the global marketing and operational support and service for the Services and distributes the Services either directly or through a non-BFLP subsidiary in the BLP Countries. BFLP, BLP and their affiliates do not provide investment advice, and nothing herein shall constitute an offer of financial instruments by BFLP, BLP or their affiliates.